

Supratools

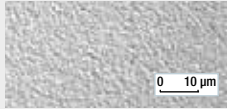
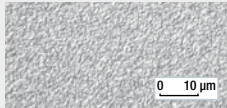
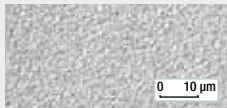
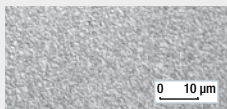
IS ALL ABOUT QUALITY AND SERVICE

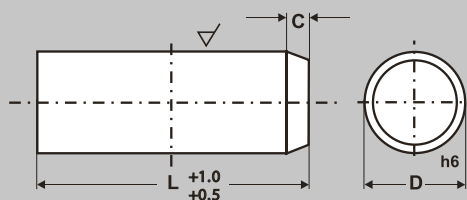
RODS

05

2014 #01

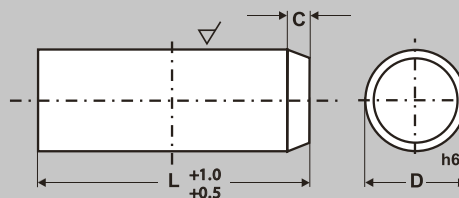
| SUPRATOOLS grade | Binder | Hardness | | Bending strength | | Toughness |
|---|--------|----------|-----------|-------------------|---------|---|
| | % | HV 10 | HRA ± 0.2 | N/mm ² | psi | K _{1C} / MPa.m ^{-1/2} |
| T06CR ISO: K01 USA: C4 + | 3.0 | 1950 | 94.0 | 2300 | 334.000 | 8.2 |
| T06MG ISO: K01-K20 USA: C3 ++ | 6.0 | 1800 | 93.3 | 2700 | 392.000 | 8.2 |
| T10MG ISO: K10-K40 USA: C3+ | 10.0 | 1650 | 92.3 | 3600 | 522.000 | 9.4 |
| T12SMG1 USA: C1 ++ | 12.0 | 1700 | 92.7 | 4000 | 580.000 | 9.2 |

| SUPRATOOLS grade | Main usage | |
|------------------|--|---|
| T06CR | Highly abrasive materials like chipboard, for drilling and milling |  |
| T06MG | Hard wood-based materials, plastics, graphite, aluminum |  |
| T10MG | Universal grade for wood and metal working |  |
| T12SMG | Very hard grade with high wear resistance for long lifetime |  |

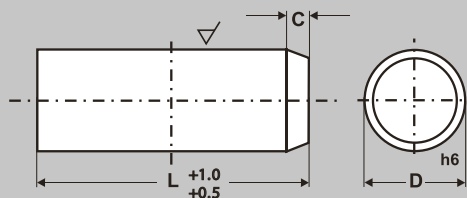


05

| D mm | L mm | C mm | T10MG ground h6 | T06MG ground h6 | T06CR ground h6 | T12SMG ground h6 |
|---------|---------|---------|--------------------|--------------------|--------------------|---------------------|
| 1.0 | 330 | | 035517 | | | |
| 1.5 | 100 | | 036366 | | | |
| | 330 | | 035518 | | | |
| 2.0 | 100 | | 036368 | | | |
| | 330 | | 035519 | | | |
| 2.5 | 50 | | 049983 | | | |
| | 100 | | 036370 | | | |
| | 330 | | 035520 | | | |
| 3.0 | 38 | | 053363 | 100980 | 114916 | |
| | 43 | | 039162 | 055446 | 114915 | |
| | 50 | | 034177 | 055445 | 114914 | |
| | 330 | | 029708 | 029707 | 114910 | 109912 |
| 3.5 | 330 | | 035521 | | | |
| 4.0 | 43 | | 039161 | 106821 | 114917 | |
| | 50 | | 034178 | 034158 | 114918 | |
| | 55 | | 039104 | 101012 | 114919 | |
| | 330 | | 029710 | 029709 | 114911 | 109913 |
| 4.5 | 330 | | 035522 | | | |
| 5.0 | 43 | | 052459 | 106780 | 114920 | |
| | 50 | | 034179 | 034159 | 114921 | |
| | 330 | | 034802 | 036541 | 114912 | 104207 |
| 5.5 | 330 | | 035523 | | | |
| 6.0 | 46 | 0.4 | 102374 | 106785 | 114922 | |
| | 50 | 0.4 | 043244 | 106787 | 114923 | |
| | 55 | 0.4 | 039107 | 101016 | 114924 | |
| | 60 | 0.4 | 034180 | 034160 | 114925 | |
| | 70 | 0.4 | 043527 | 106399 | 114926 | |
| | 330 | | 029712 | 029711 | 114913 | 101390 |
| 6.5 | 330 | | 035524 | | | |
| 7.0 | 330 | | 035525 | 036544 | 114927 | 109914 |
| 7.5 | 330 | | 035526 | | | |

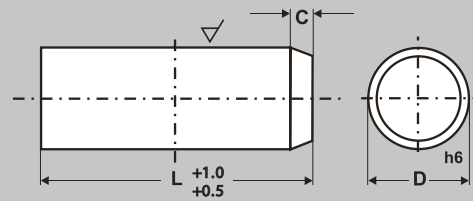


| D mm | L mm | C mm | T10MG ground h6 | T06MG ground h6 | T06CR ground h6 | T12SMG ground h6 |
|---------|---------|---------|--------------------|--------------------|--------------------|---------------------|
| 8.0 | 50 | 0.6 | 045419 | 106788 | 114941 | |
| | 55 | 0.6 | 041602 | 106789 | 114942 | |
| | 56 | 0.6 | 102197 | 106790 | 114943 | |
| | 60 | 0.6 | 046522 | 102018 | 114944 | |
| | 70 | 0.6 | 038349 | 101017 | 114945 | |
| | 75 | 0.6 | 041481 | 101018 | 114946 | |
| | 80 | 0.6 | 034181 | 034161 | 114947 | |
| | 100 | 0.6 | 036392 | 036391 | 114948 | |
| | 330 | | 029714 | 029713 | 114928 | 100702 |
| 8.5 | 330 | | 035527 | | | |
| 9.0 | 330 | | 035528 | | | |
| 9.5 | 330 | | 035529 | | | |
| 10.0 | 65 | 0.6 | 102514 | 106791 | 114951 | |
| | 70 | 0.6 | 038350 | 101019 | 114953 | |
| | 75 | 0.6 | 038351 | 055813 | 114954 | |
| | 80 | 0.6 | 034182 | 106402 | 114955 | |
| | 90 | 0.6 | 052421 | 106792 | 114956 | |
| | 100 | 0.6 | 034183 | 036399 | 114957 | |
| | 110 | 0.6 | 111134 | | | |
| | 330 | | 029716 | 029715 | 114929 | 100701 |
| 10.5 | 330 | | 035530 | | | |
| 11.0 | 330 | | 035531 | | | |
| 11.5 | 330 | | 035532 | | | |
| 12.0 | 80 | 0.8 | 034184 | 053694 | 114958 | |
| | 90 | 0.8 | 104347 | 101020 | 114959 | |
| | 100 | 0.8 | 034185 | 034165 | 114960 | |
| | 110 | 0.8 | 052744 | 106794 | 114961 | |
| | 120 | 0.8 | 051331 | 106795 | 114962 | |
| | 155 | 0.8 | 106797 | 106796 | 114963 | |
| | 330 | | 029718 | 029717 | 114930 | 100698 |
| 12.5 | 330 | | 035533 | | | |
| 13.0 | 330 | | 035534 | | | |



05

| D mm | L mm | C mm | T10MG ground h6 | T06MG ground h6 | T06CR ground h6 | T12SMG ground h6 |
|---------|---------|---------|--------------------|--------------------|--------------------|---------------------|
| 14.0 | 90 | 0.8 | 041482 | 101022 | 114964 | |
| | 100 | 0.8 | 034186 | 034166 | 114965 | |
| | 110 | 0.8 | 038353 | 101023 | 114966 | |
| | 120 | 0.8 | 053659 | 106801 | 114967 | |
| | 330 | | 029720 | 029719 | 114931 | 109915 |
| 14.5 | 330 | | 035536 | | | |
| 15.0 | 330 | | 035537 | | | |
| 16.0 | 80 | 0.8 | 052553 | 106412 | 114972 | |
| | 90 | 0.8 | 038354 | 101024 | 114973 | |
| | 93 | 0.8 | 106803 | 106802 | 114974 | |
| | 100 | 0.8 | 034187 | 034167 | 114975 | |
| | 110 | 0.8 | 038355 | 101025 | 114976 | |
| | 120 | 0.8 | 034188 | 034168 | 114977 | |
| | 130 | 0.8 | 053858 | 106805 | 114978 | |
| | 140 | 0.8 | 038356 | 101026 | 114979 | |
| | 150 | 0.8 | 043662 | 103951 | 114980 | |
| | 155 | 0.8 | 041603 | 106806 | 114981 | |
| | 170 | 0.8 | 052410 | 106807 | 114982 | |
| | 175 | 0.8 | 053515 | 106808 | 114983 | |
| | 180 | 0.8 | 111133 | | | |
| | 330 | | 029722 | 029721 | 114932 | 103950 |
| 16.5 | 330 | | 035539 | | | |
| 17.0 | 330 | | 035540 | | | |
| 18.0 | 93 | 0.8 | 106809 | 106810 | 114984 | |
| | 100 | 0.8 | 034189 | 034169 | 114985 | |
| | 110 | 0.8 | 102817 | 106811 | 114986 | |
| | 115 | 0.8 | 038357 | 101027 | 114987 | |
| | 120 | 0.8 | 034190 | 034170 | 114988 | |
| | 330 | | 029724 | 029723 | 114933 | 109916 |
| 18.5 | 330 | | 036573 | | | |
| 19.0 | 330 | | 035541 | | | |
| 20.0 | 100 | 1.0 | 034192 | 034172 | 114989 | |
| | 110 | 1.0 | 044472 | 106403 | 114990 | |
| | 115 | 1.0 | 038358 | 101028 | 114991 | |
| | 120 | 1.0 | 034193 | 034173 | 114992 | |
| | 125 | 1.0 | 100241 | 106812 | 114993 | |



| D mm | L mm | C mm | T10MG ground h6 | T06MG ground h6 | T06CR ground h6 | T12SMG ground h6 |
|---------|---------|---------|--------------------|--------------------|--------------------|---------------------|
| 20.0 | 130 | 1.0 | 106044 | 106813 | 114994 | |
| | 135 | 1.0 | 039115 | 054819 | 114995 | |
| | 140 | 1.0 | 038359 | 101029 | 114996 | |
| | 145 | 1.0 | 105702 | 106814 | 114997 | |
| | 150 | 1.0 | 034194 | 034174 | 114998 | |
| | 155 | 1.0 | 100073 | 106815 | 114999 | |
| | 170 | 1.0 | 055570 | 106816 | 115000 | |
| | 330 | | 029726 | 029725 | 114934 | 109917 |
| 20.5 | 330 | | 036577 | | | |
| 21.0 | 330 | | 035542 | | | |
| 22.0 | 330 | | 035543 | 036562 | 114935 | 109918 |
| 23.0 | 330 | | 035544 | | | |
| 23.5 | 330 | | 036583 | | | |
| 24.0 | 330 | | 035545 | | | |
| 25.0 | 110 | 1.0 | 102424 | 104306 | 115005 | |
| | 125 | 1.0 | 106818 | 106817 | 115006 | |
| | 155 | 1.0 | 102765 | 106819 | 115007 | |
| | 330 | | 029728 | 029727 | 114936 | 109919 |
| 26.0 | 330 | | 035546 | | | |
| 27.0 | 330 | | 036587 | | | |
| 28.0 | 330 | | 035547 | 036566 | 114937 | 109920 |
| 29.0 | 330 | | 036589 | | | |
| 30.0 | 330 | | 035548 | 036567 | 114938 | |
| 31.0 | 330 | | 036591 | | | |
| 32.0 | 330 | | 035549 | 036568 | 114939 | |
| 35.0 | 330 | | 035552 | 036569 | 114940 | |

Supratools

IS ALL ABOUT QUALITY AND SERVICE

Address.

Rua do Cubo, N°26 R/C J
4570-060 Balasar
Portugal

Phone / Fax.

(+351) 252 967 423

Email.

info@supratools.com

Web.

www.supratools.com